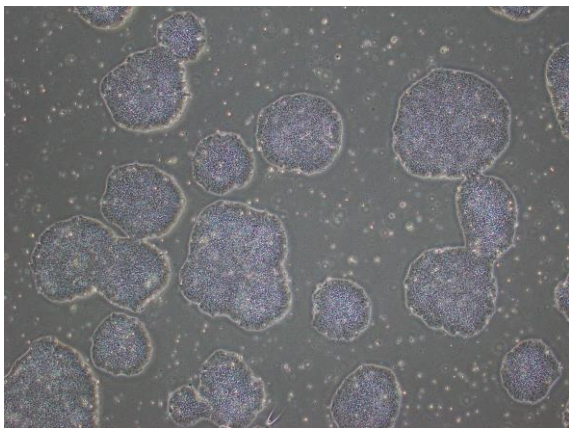
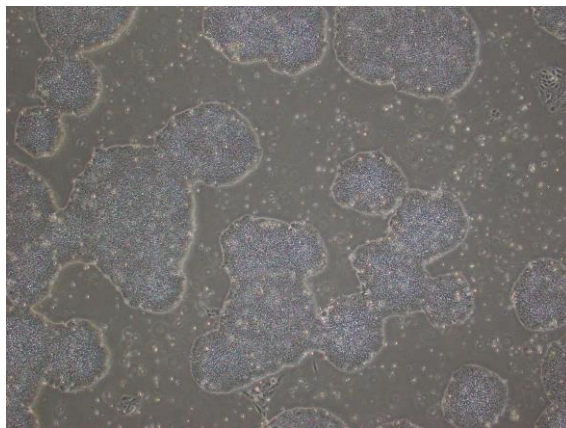


## 【 CiRA-j-1535 】 Morphology of iPSC colonies

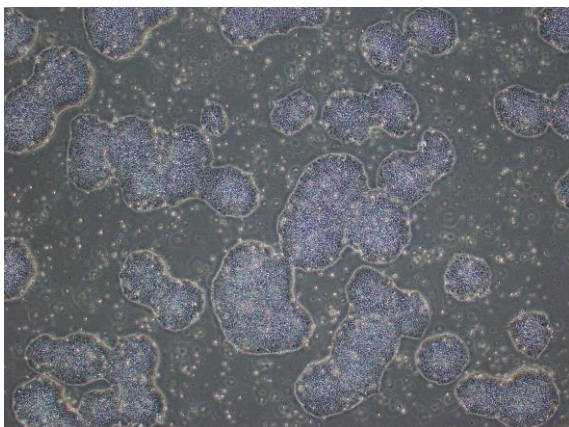
CiRA-j-1535-A: passage-3



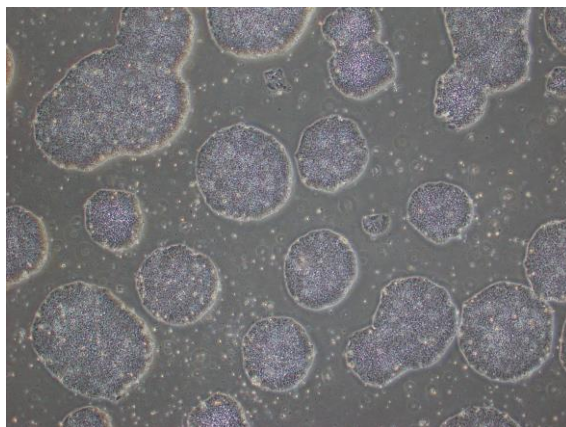
CiRA-j-1535-B: passage-3



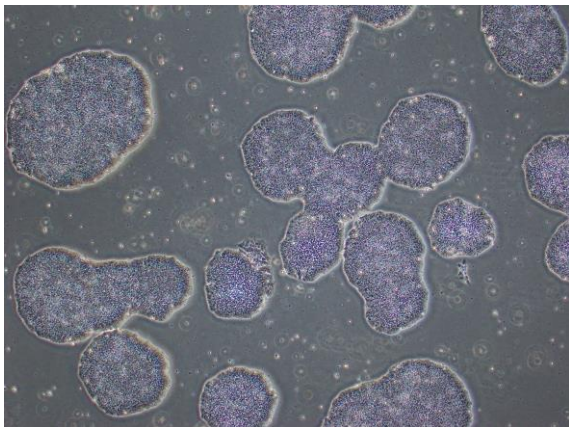
CiRA-j-1535-C: passage-3



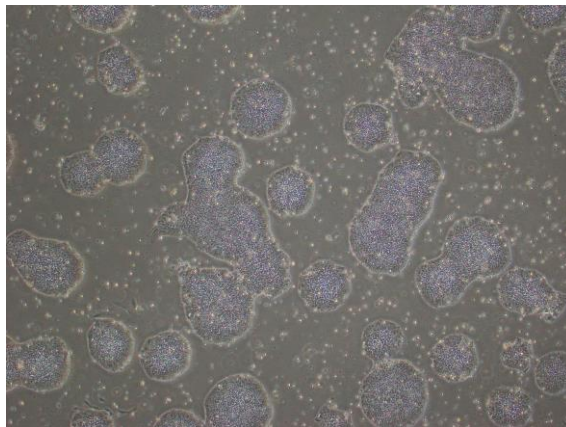
CiRA-j-1535-D: passage-4



CiRA-j-1535-E: passage-3



CiRA-j-1535-F: passage-3



( All images were captured at 4x magnification )